



Since 1978 Genelec has developed high quality studio monitors and active speaker systems. Over the years and based on customer requirements, Genelec R&D team's technical ambition has led to several innovative technologies and revolutionary designs which have refined every product to set a benchmark in the industry. Maintaining a wide product offering has given Genelec challenges and ultimately a lot of experience. Every Genelec customer benefits from this experience by having precision tools to rely on.

Genelec products are designed for demanding professional, home and AV installation use. They reveal the original nuances of the sound, without leaving anything out nor adding anything to the signal in any stage of the production. Genelec products are made to last, with pride and care by our own production staff in Finland. Many of our very first products are still in active use and we continue our strong commitment to provide service and spare parts for all products for at least five years after their discontinuation, in many cases much longer.



M030 Studio Monitor



Product Overview:

The Genelec M030 studio monitor features groundbreaking technological innovations achieving exceptional sound qualities.

The M030 features our advanced Directivity Control Waveguide (DCW™) and Laminar Integrated Port (LIP™) built into our environmentally friendly Natural Composite Enclosure (NCE™). Designed and built to be truthful to the source and to ensure enduring listening performance, the M030 low distortion, high output Class D amplifiers power a 5 inch woofer and a 3/4 inch tweeter housed in a large DCW. Designed by acclaimed industrial designer Harri Koskinen, every M030 is individually tested and calibrated according to Genelec's stringent standards, featuring easy-to-use room response controls for easy adjustment to any acoustic environment.

With Genelec M030, dream big – then make it happen

M040 Studio Monitor



Product Overview:

Sustainable materials and groundbreaking technological innovations take the M040 beyond the ordinary, offering exceptional sound qualities.

The M040 features our advanced Directivity Control Waveguide (DCW™) and Laminar Integrated Port (LIP™) built into our environmentally friendly Natural Composite Enclosure (NCE™). Designed by acclaimed industrial designer Harri Koskinen, the M040 is built to be truthful to the source and to ensure enduring listening performance. Every single M040 is carefully handcrafted, tested and calibrated in our factory in Finland with unmatched attention to details. Its low distortion, high output Class D amplifiers power a 6.5 inch woofer and a 1 inch tweeter housed in a large DCW and its room response controls are easy-to-use, enabling adjustment to any acoustic environment.

With Genelec M040, dream big – and see how far you can go.

8010A Studio Monitor



Product Overview:

The extremely compact Genelec 8010A studio monitor allows professionals to work in small studios and on the move with an accurate monitoring tool

Exceptional sound qualities, small size and universal mains input voltage make 8010A's perfect companions while on the move. With a balanced XLR input, 3-inch woofer, 3/4-inch tweeter and two efficient Class D power amplifiers, 8010A's produce more undistorted sound pressure level than you might expect. It features Genelec Intelligent Signal Sensing (ISS™) circuitry which switches the monitor to standby when no audio input is detected (ErP 2013 Directive).

Several mounting accessories ease the installation of 8010A's and make them ideal for music studios, mobile vans and portable recording devices.

8020C Studio Monitor



Product Overview:

The small Genelec 8020C studio monitor is designed to achieve accurate monitoring in all types of listening environments, particularly where space is at premium.

The compact 8020C displays outstanding performance and takes full advantage of the 8000 Series unconventional and innovative features. The all-aluminium Minimum Diffraction Enclosure (MDE™) and advanced Directivity Control Waveguide (DCW™) technologies are carefully matched with state-of-the-art electronics and transducers design. It also features Genelec Intelligent Signal Sensing (ISS) circuitry which switches the monitor to standby when no audio input is detected (ErP 2013 Directive).

Excellent directivity characteristics and accurate imaging make the 8020C the perfect near-field monitor for music and post-production studios, mobile vans and digital workstations.

8030B Studio Monitor



Product Overview:

The Genelec 8030B studio monitor is a powerful monitor ideal for a wide range of applications and listening environments.

The 8030B features the rounded edges Minimum Diffraction Enclosure (MDE™) which incorporates the advanced Directivity Control Waveguide (DCW™). The all-aluminium 8030B enclosure offers a rigid structure with thin walls and maximised internal volume. The curved reflex tube is flow optimized to increase the woofer's low frequency extension and SPL capacity. 8030B features Genelec Intelligent Signal Sensing (ISS™) circuitry which switches the monitor to standby when no audio input is detected (ErP 2013 Directive).

New drivers and electronics technology improve sound resolution making the 8030B ideal for music studios, mobile vans, digital workstations, radio and TV broadcasting.

8040B Studio Monitor



Product Overview:

Boasting astonishing performance, the 8040B studio monitor is ideal for use in all types of audio and video production environments

The Genelec 8040B studio monitor produces high SPL, low colouration and broad bandwidth in a modest enclosure. It contains drivers, matched power amplifiers, active crossover and protection circuitry. The 8040 Minimum Diffraction Enclosure (MDE™) and advanced Directivity Control Waveguide (DCW™) technologies provide superior frequency balance and neutral sound imaging in all production environments. 8040B features Genelec Intelligent Signal Sensing (ISS™) circuitry which switches the monitor to standby when no audio input is detected (ErP 2013 Directive).

Its superior performance makes it ideal for many applications, such as music studios, post-production facilities, mobile vans, radio and TV broadcasting.

8050B Studio Monitor



Product Overview:

Producing high SPL over a very wide frequency response, the 8050B studio monitor is a powerful and very accurate reference monitoring system.

Very high SPL output, high dynamic range, low colouration and wide frequency response characterise Genelec 8050B active monitor. The 8050B all-aluminium Minimum Diffraction Enclosure (MDE™) contains drivers, power amplifiers, active crossover and protection circuitry. The surface optimized advanced Directivity Control Waveguide (DCW™) provides outstanding frequency balance, stable and neutral sound imaging in all environments. 8050B features Genelec Intelligent Signal Sensing (ISS™) circuitry which switches the monitor to standby when no audio input is detected (ErP 2013 Directive).

It is the monitoring tool for large recording studios, mastering suites, post-production houses, radio and TV broadcasting.

1032B Studio Monitor



Product Overview:

The Genelec 1032B studio monitor is a powerful system providing accurate monitoring in mid-sized production environments.

The 8320A extends Genelec SAM system offering to a very wide range of facilities. A new and highly intuitive Genelec Loudspeaker Manager (GLM™ 2.0) control network and software allows adjustments of all aspects of monitor settings and full system control. Genelec AutoCal™ allows to automatically align every monitor for level, timing, and equalisation of room response anomalies. The 8320A features Genelec MDE™ and DCW™ technologies, a flow optimized reflex port and very neutral frequency response.

Combining performance never heard before, the 8320A is the small monitor for music studios, post-production houses, digital edit suites, radio, TV and outside broadcasting.

8240A SAM™ Studio Monitor



Product Overview:

Audio monitoring precision is lifted to an entirely new level of accuracy with Genelec 8240A SAM™ studio monitor.

The 8240A features Genelec MDE™ and DCW™ technologies, a flow optimized reflex port, high SPL, low colouration and broad bandwidth in a modest enclosure. This SAM system features Genelec AutoCal™ and Genelec Loudspeaker Manager (GLM™) control network technologies which allow adjustments of all aspects of monitor settings and full system control. GLM allows to automatically align every monitor on the network in terms of level, timing, and equalisation of room response anomalies.

The 8240A is the most advanced monitoring tool for recording studios, post-production houses, digital edit suites, radio, TV and outside broadcasting

8250A SAM™ Studio Monitor



Product Overview:

The 8250A SAM™ studio monitor adds new levels of accuracy and intelligence to monitoring with its ability to be used with all other SAM systems.

The 8250A combines Genelec experience in the design of two-way systems together with its state of the art AutoCal™ and Genelec Loudspeaker Manager (GLM™) control network technologies. GLM allows to automatically align every monitor on the network in terms of level, timing, and equalisation of room response anomalies. The 8250A also features Genelec MDE™ and DCW™ technologies, a flow optimized reflex port and very high undistorted SPL over a wide bandwidth.

The 8250A is the monitoring solution for recording studios, post-production houses, digital mastering facilities, radio and TV broadcasting.

8260A SAM™ Studio Monitor



Product Overview:

The 8260A SAM™ studio monitor is a masterpiece in electro-acoustic design. It features Genelec's proprietary Minimum Diffraction Coaxial (MDC™) driver.

The 8260A combines outstanding three-way monitor design with Genelec state of the art AutoCal™ and Genelec Loudspeaker Manager (GLM™) control network technologies. GLM allows to automatically align every monitor on the network in terms of level, timing, and equalisation of room response anomalies. Together with the 8260A breakthrough MDC driver design, Genelec MDE™ and advanced DCW™ technologies provide accurate imaging and outstanding clarity and definition of the inner details of the music. The 8260A is the most sophisticated monitoring solution for recording studios, post-production houses, digital mastering facilities, radio and TV broadcasting.

8320A SAM™ Studio Monitor



Product Overview:

The compact 8320A SAM™ studio monitor is today's most advanced and flexible monitoring solution.

The 8320A extends Genelec SAM system offering to a very wide range of facilities. A new and highly intuitive Genelec Loudspeaker Manager (GLM™ 2.0) control network and software allows adjustments of all aspects of monitor settings and full system control. Genelec AutoCal™ allows to automatically align every monitor for level, timing, and equalisation of room response anomalies. The 8320A features Genelec MDE™ and DCW™ technologies, a flow optimized reflex port and very neutral frequency response.

Combining performance never heard before, the 8320A is the small monitor for music studios, post-production houses, digital edit suites, radio, TV and outside broadcasting.

8330A SAM™ Studio Monitor



Product Overview:

The powerful 8330A SAM™ studio monitor is today's most advanced and flexible monitoring solution.

The 8320A extends Genelec SAM system offering to a very wide range of facilities. A new and highly intuitive Genelec Loudspeaker Manager (GLM™ 2.0) control network and software allows adjustments of all aspects of monitor settings and full system control. Genelec AutoCal™ allows to automatically align every monitor for level, timing, and equalisation of room response anomalies. The 8320A features Genelec MDE™ and DCW™ technologies, a flow optimized reflex port and very neutral frequency response.

Combining performance never heard before, the 8320A is the small monitor for music studios, post-production houses, digital edit suites, radio, TV and outside broadcasting.

8340A SAM™ Studio Monitor



Product Overview:

Audio monitoring accuracy is lifted to an entirely new level of performance with the 8340A Smart Active Monitor (SAM™).

The 8340A features Genelec MDE™ and DCW™ technologies, Class D amplification, a flow optimized reflex port, very high sound pressure level, low colouration and broad bandwidth as well as universal mains power supply. Fully backward compatible, the 8340A shares all technical attributes and outstanding benefits of all SAM Systems family-members such as Genelec AutoCal™ and Genelec Loudspeaker Manager (GLM™) control network technologies which allow adjustments of all aspects of monitor settings.

Covering all possible analogue or digital audio applications, the 8340A is the most advanced monitoring solution for recording studios, post-production houses, digital edit suites, radio, TV and outside broadcasting. You can now focus all your creativity in the audio productions with a reliable monitoring tool, anywhere you are.

8430A IP SAM™ Studio Monitor



Product Overview:

The 8430A IP SAM™ studio monitor is a high resolution audio monitoring solution using the power of Smart Active Monitoring™ and GLM™ AutoCal™, automated system calibration, technologies for professional audio-over-IP (AoIP) applications.

The 8430A features Genelec MDE™ and DCW™ technologies, a flow optimized reflex port, high SPL, low noise and wide uncoloured response in a very compact enclosure. The Genelec Loudspeaker Manager (GLM™ 2.0) control network and software allows adjustments of all aspects of monitor settings and full system control. Genelec AutoCal™ allows to automatically align every monitor on the network for level, timing, and equalisation of room response anomalies.

The 8430A Ethernet audio streaming capability is compliant with AES67 and Ravenna industry standards and supports all the typical standard audio sample rates. With its Genelec Class D amplifier technology, universal mains voltage and very high reliability, the 8430 fulfills all the stringent quality requirements of modern IP streaming applications

8350A SAM™ Studio Monitor



Product Overview:

The 8350A Smart Active Monitor (SAM™) adds new levels of accuracy and intelligence in today's most advanced and flexible monitoring solution.

The 8350A features Genelec MDE™ and DCW™ technologies, Class D amplification, a flow optimized reflex port, high sound pressure level and wide uncoloured response as well as universal mains power supply. Fully backward compatible, the 8350A shares all technical attributes and outstanding benefits of all SAM Systems family-members such as Genelec AutoCal™ and Genelec Loudspeaker Manager (GLM™) control network technologies which allow adjustments of all aspects of monitor settings.

Covering all possible analogue or digital audio applications, the 8350A is the indispensable monitoring solution for recording studios, post-production houses, digital edit suites, radio, TV and outside broadcasting. You can now focus all your creativity in the audio productions with a reliable monitoring tool, anywhere you are.

8351A SAM™ Studio Monitor



Product Overview:

The unconventional and delightfully compact 8351A SAM™ studio monitor is a revolutionary achievement in three-way monitor design.

The 8351A combines our breakthrough Acoustically Concealed Woofers (ACW™) technology together with our Minimum Diffraction Coaxial (MDC™) driver and Maximised Directivity Control Waveguide (MaxDCW™) to produce controlled directivity over a very wide bandwidth. Genelec Loudspeaker Manager (GLM™ 2.0) computer control allows for repeatable, consistent performance over flexible proprietary network. Genelec AutoCal™ measures and automatically align every monitor on the network for level, timing, and equalisation of room response anomalies.

Providing identical performance in both vertical and horizontal orientation, the 8351A delivers outstanding monitoring accuracy for music studios, post-production houses, edit suites, radio, TV and outside broadcast applications.

1234A SAM™ Studio Monitor



Product Overview:

The 1234A SAM™ studio monitor is a high performance tri-amplified main monitoring system featuring AutoCal™ and GLM™ technologies.

Designed to achieve accurate and powerful sound reproduction in demanding recording and mixing environments, the Genelec 1234A SAM system and its Remote Amplifier Module RAM XL represents the most modern technology in high performance monitoring. Typically flush mounted, the 1234A SAM studio monitor features a large Directivity Control Waveguide (DCW™) which provides very precise on- and off-axis imaging and neutral sound reproduction. State-of-the-art AutoCal™ and GLM™ technologies allows to automatically align every monitor in terms of level, timing, and equalisation of room response anomalies.



The 1234A is the main monitoring solution for music recording studios, film and video post-production facilities as well as mastering suites.

1236A SAM™ Studio Monitor



Product Overview:

The flagship 1236 SAM™ studio monitor is a masterpiece of modern technology, packing the most modern and intelligent technology into an extremely powerful, high performance tri-amplified main monitoring system.

The Genelec 1236A SAM system and its individually calibrated Remote Amplifier Module RAM XL are designed to achieve extreme performance requirements for the most demanding recording and mixing environments. Designed to flush-mounting, the 1236A features a very large Directivity Control Waveguide (DCW™) providing extremely precise on- and off-axis imaging and neutral sound reproduction. State-of-the-art AutoCal™ and GLM™ technologies allows to automatically align every monitor to the acoustic environment and to different listening positions.

The 1236A is the highest reference and the most modern solution in main monitoring for music recording studios, film and video post-production facilities.

1237A SAM™ Studio Monitor



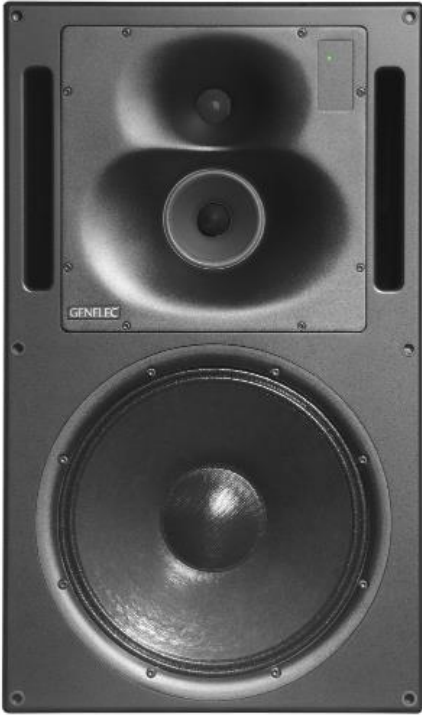
Product Overview:

The Genelec 1237A SAM™ studio monitor is a tri-amplified system featuring AutoCal™ and GLM™ technologies and powerful Class D amplification.

The 1237A combines Genelec 35 years of experience in the design of reliable three-way systems together with its state of the art AutoCal™ and Genelec Loudspeaker Manager (GLM™) control network technologies. GLM allows to automatically align every monitor on the network in terms of level, timing, and equalisation of room response anomalies. Typically flush mounted, the 1237A system features a large Directivity Control Waveguide (DCW™) which provides excellent on- and off-axis imaging even in difficult acoustic environments.

It is the superior monitor tool for recording studios, post-production houses, digital mastering facilities, radio and TV broadcasting.

1238A SAM™ Studio Monitor



Product Overview:

Featuring AutoCal™ and GLM™ technologies, the 1238A SAM™ studio monitor is a Class D, tri-amplified monitoring system.

Genelec 1238A SAM studio monitor is the result of 35 years of experience in the design of powerful and accurate three-way systems together with state of the art AutoCal™ and Genelec Loudspeaker Manager (GLM™) control network technologies. GLM allows to automatically align every monitor on the network in terms of level, timing, and equalisation of room response anomalies. Typically flush mounted, the 1238A features a large Directivity Control Waveguide (DCW™) which provides very precise on- and off-axis imaging even in challenging acoustic environments. It is the reliable monitor for recording studios, post-production houses, digital mastering facilities, radio and TV broadcasting.

1238AC SAM™ Studio Monitor



Product Overview:

Featuring AutoCal™ and GLM™ technologies, the slim and compact 1238AC SAM™ studio monitor is a dedicated centre channel system featuring Class D amplification.

Genelec 1238AC SAM studio monitor ideally suited as centre channel monitor in production rooms where space is limited around the video monitor or the viewing window. Using Genelec state of the art AutoCal™ and Genelec Loudspeaker Manager (GLM™) control network technologies, the GLM system is able to automatically align every monitor on the network in terms of level, timing, and equalisation of room response anomalies. Typically flush mounted, the 1238AC features a large Directivity Control Waveguide (DCW™) which provides very precise on- and off-axis imaging even in challenging acoustic environments.

The 1238AC is the perfect match for multichannel applications in music studios, film and video post-production, as well as broadcasting facilities.

1238CF SAM™ Studio Monitor



Product Overview:

Genelec 1238CF SAM™ studio monitor is a tri-amplified system designed to be used with a complementary subwoofer.

The 1238CF is based on the successful 1038CF electro-acoustic design, combined with Genelec state of the art AutoCal™ and Genelec Loudspeaker Manager (GLM™) control network technologies. GLM allows to automatically align every monitor on the network in terms of level, timing, and equalisation of room response anomalies. Typically flush mounted, the 1238CF includes a large Directivity Control Waveguide (DCW™), drivers, enclosure, multiple power amplifiers, active low signal level crossovers, precise room response controls and protection circuitry.

The 1238CF is perfect for music recording studios, film and video post-productions, broadcast facilities and mastering suites.

7040A Studio Subwoofer



Product Overview:

The ultra-compact Genelec 7040A studio subwoofer is designed to provide accurate low frequency reproduction in limited production spaces.

Offering a professional and reliable low frequency reproduction system in a transportable package the Genelec 7040A is the ideal companion to complement Genelec 8010 and 8020 monitors. It extends the low frequency response down to 30 Hz and uses Genelec's patented Laminar Spiral Enclosure (LSE™) technology which provides precise bass articulation and extended low frequency capacity. This stereo subwoofer system can produce 100 dB of undistorted SPL using a 6.5 inch woofer and a powerful Genelec-designed Class D amplifier.

With its very small footprint, the 7040A is the subwoofer solution for recording and composing/project studios, mobile vans and portable recording systems.

7060B Studio Subwoofer



Product Overview:

Genelec 7060B studio subwoofer is powerful and precise bass monitoring tool for modern multichannel 5.1 or 6.1 or conventional stereo systems.

With its 19 Hz lower cut-off frequency, high sound pressure capability and patented Laminar Spiral Enclosure (LSE™) technology, it can be adapted to all low frequency monitoring situations. The amplifier unit integrated into the cabinet contains active crossover filters, driver overload protection circuitry, power amplifier and complete bass management system. The built-in unit has six signal inputs and outputs, a summed signal output, an 85/120 Hz selectable low-pass LFE input and a 0 / +10dB LFE channel sensitivity switch. The 7060B is the LF monitoring tool for music studios, mobile vans, digital workstations, radio and TV broadcasting.

7070A Studio Subwoofer



Product Overview:

Genelec 7070A studio subwoofer is a versatile and accurate low frequency tool for all professional stereo and multichannel audio systems.

The 7070A uses Genelec's patented Laminar Spiral Enclosure (LSE™) technology featuring 19 Hz lower cut-off frequency, high sound pressure capability and very articulate reproduction. Adapted to all low frequency monitoring situations, the amplifier unit integrated into the cabinet contains active crossover filters, driver overload protection circuitry, power amplifier and complete bass management system. The built-in unit has six signal inputs and outputs, a summed signal output, an 85/120 Hz selectable low-pass LFE input and a 0 / +10dB LFE channel sensitivity switch. The 7070A offers superior performance in recording studios, post-production facilities, mobile vans, radio and TV broadcasting.

7071A Studio Subwoofer



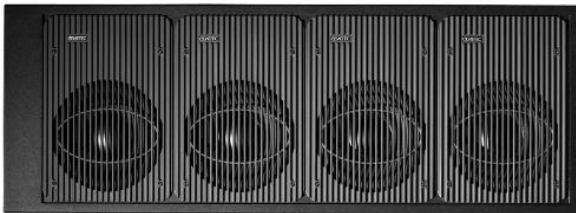
Product Overview:

The high power Genelec 7071A studio subwoofer is an outstanding low frequency tool for large professional stereo and multichannel audio systems.

The dual 12" 7071A uses a large Genelec's patented Laminar Spiral Enclosure (LSE™) with a 19 Hz lower cut-off frequency, high sound pressure capability and very neutral reproduction characteristics. Its amplifier unit integrated into the cabinet contains active crossover filters, driver overload protection circuitry, power amplifier and complete bass management system. The built-in unit has six signal inputs and outputs, a summed signal output, an 85/120 Hz selectable low-pass LFE input and a 0 / +10dB LFE channel sensitivity switch.

The 7071A offers high SPL capacity for recording studios, mastering suites, post-production houses and broadcast facilities.

7073A Studio Subwoofer



Product Overview:

The Genelec 7073A studio subwoofer is a powerful and precise low frequency reproduction tool for large multichannel and stereo audio systems.

Featuring four 12" drivers, the 7073A 19 Hz lower cut-off frequency and 124 dB sound pressure output capability are sufficient to handle the most demanding applications. All electronics are integrated into the subwoofer enclosure: active crossover filters, driver overload protection circuitry, power amplifier and complete bass management system. The built-in unit has six signal inputs and outputs, a summed signal output, an 85/120 Hz selectable low-pass LFE input and a 0 / +10dB LFE channel sensitivity switch.

The 7073A is Genelec's most powerful subwoofer tool recording studios, mastering suites, post-production houses and broadcast facilities.

7260A SAM™ Studio Subwoofer



Product Overview:

The Genelec 7260A SAM™ studio subwoofer provides accurate monitoring with AutoCal™ and Genelec Loudspeaker Manager™ technologies.

The 7260A brings together the Laminar Spiral Enclosure (LSE™) technology with state of the art AutoCal and GLM control network technologies. GLM allows to automatically align every monitor on the network in terms of level, timing, and equalisation of room response anomalies. Its 19 Hz lower cut-off, high sound pressure output and versatile digital bass management system makes it a very versatile monitoring tool. The amplifier unit is integrated into the enclosure containing active DSP crossover filters, driver overload protection circuitry and power amplifier.

The 7260A is the advanced monitoring tool for music studios, mobile vans, digital workstations, radio and TV broadcasting..

7270A SAM™ Studio Subwoofer



Product Overview:

Genelec 7270A SAM™ studio subwoofer brings the flexibility and accuracy of auto-calibration to an entirely new level using AutoCal™ and GLM™ technologies

The Genelec 7270A combines the Laminar Spiral Enclosure (LSE™) technology with state of the art AutoCal and GLM control network technologies for the highest level of monitoring flexibility. GLM allows to automatically align every monitor on the network in terms of level, timing, and equalisation of room response anomalies in all applications. With its 19 Hz lower cut-off frequency, high SPL output and comprehensive 7.1 digital bass management system, the 7270A adapts to all low frequency monitoring situations.

The 7270A is a powerful monitoring solution for recording studios, post-production facilities, mobile vans, radio and TV broadcasting.

7271A SAM™ Studio Subwoofer



Product Overview:

Genelec 7271A SAM™ studio subwoofer is a powerful low frequency monitoring solution using AutoCal™ and GLM™ technologies.

The Genelec 7271A combines the Laminar Spiral Enclosure (LSE™) technology with state of the art AutoCal and GLM control network technologies for the highest level of monitoring accuracy and flexibility. With its 19 Hz lower cut-off frequency, very high SPL output and powerful 7.1 digital bass management system, the 7270A adapts to all low frequency monitoring situations. GLM enhances further its performance by automatically aligning every monitor on the network in terms of level, timing, and equalisation of room response anomalies.

The 7271A is the most advanced solution for recording studios, mastering suites, post-production houses and broadcast facilities.

7350A SAM™ Studio Subwoofer



Product Overview:

The Genelec 7350A SAM™ studio subwoofer provides outstanding monitoring accuracy and flexibility in a very small footprint.

Genelec 7350A SAM subwoofer is designed to complement both 8320A and 8330A SAM monitors using the new and highly intuitive Genelec Loudspeaker Manager (GLM™ 2.0) control, complemented with a new measurement microphone and network adapter unit. It features Genelec Laminar Spiral Enclosure (LSE™) technology, providing low cut-off and clean articulated bass reproduction. Genelec state-of-the-art AutoCal™ allows to automatically align every monitor/subwoofer for level, timing, crossover phase and equalisation of room response anomalies.

Combining exceptional performance and flexibility, the 7350A is the subwoofer for music studios, post-production houses, digital edit suites, radio, TV and outside broadcasting.

7360A SAM™ Studio Subwoofer



Product Overview:

The Genelec 7360A SAM™ subwoofer provides accurate low frequency monitoring for all analogue and digital applications and features AutoCal™ and GLM™

The 7360A combines the Laminar Spiral Enclosure (LSE™) technology with AutoCal™ and GLM™ control network technologies. Genelec state-of-the-art AutoCal™ allows to automatically align every subwoofer for level, timing, crossover phase and equalisation of room response anomalies. Providing extended low frequency performance, accurate tonal characteristics reproduction and high dynamic capabilities, the 7360A supports a distributed bass management architecture. This cost-effective package offers 7.1 channel analogue XLR inputs and outputs together with stereo AES/EBU XLR inputs and outputs without the need for additional external A/D converters. A Class D amplifier unit is integrated into the enclosure and contains DSP crossover filters, driver overload and protection circuitry.

The 7360A is the low frequency monitoring tool for music studios, mobile vans, digital workstations, radio and TV broadcasting, providing outstanding sound clarity, definition and neutrality you can trust. Offering comfort, flexibility and unlimited configuration possibilities, you can now only focus on your creative work.

7370A SAM™ Studio Subwoofer



Product Overview:

Genelec 7370A SAM™ subwoofer provides powerful, accurate low frequency monitoring for all analogue and digital applications with the flexibility of AutoCal™ and GLM™ technologies.

The 7370A combines the Laminar Spiral Enclosure (LSE™) technology with AutoCal™ and GLM™ control network technologies. Genelec state-of-the-art AutoCal™ allows to automatically align every subwoofer for level, timing, crossover phase and equalisation of room response anomalies. Providing high SPL, extended low frequency performance, accurate tonal characteristics reproduction and high dynamic capabilities, the 7370A supports a distributed bass management architecture. As a cost-effective package it offers 7.1 channel analogue XLR inputs and outputs together with stereo AES/EBU XLR inputs and outputs without the need for additional external A/D converters. A Class D amplifier unit is integrated into the enclosure and

contains DSP crossover filters, driver overload and protection circuitry.

The 7370A is the low frequency monitoring tool for demanding music studios, mobile vans, digital workstations, radio and TV broadcasting, providing outstanding sound clarity, definition and neutrality you can trust. Offering comfort, flexibility and unlimited configuration possibilities, you can now only focus on your creative work.

9000A Stereo Volume Controller



Product Overview:

Genelec 9000A Stereo Volume Control provides convenient volume control for all Genelec active speakers.

The volume control input and output have 3.5 mm stereo male and female connectors providing immediate connectivity with most computers and laptops, MP3 players and game stations. The 9000A is available in three colours: Black, Silver and White.

A converter cable converting 2 x RCA to 3.5 mm stereo (female) is needed for audio equipment with RCA outputs. A converter cable converting 3.5 mm stereo (male) to 2 x XLR (male) is needed to use 9000A Stereo Volume Control with Genelec active loudspeakers having XLR input. These cables can be obtained from an authorized Genelec dealer.

The connecting cable on 9000A is Y-shaped. After 1 meter (3 ft 3") from the control knob the single cable splits into two 1 meter (3 ft 3") cables, one for audio input, one for audio output.

Technical Specifications

- Weight: 0,325 kg (0,72 lbs)
- Height: 42 mm (1 5/8")
- Diameter: 60 mm (2 1/8")

9101A Wireless Volume Controller



Product Overview:

The Genelec 9101A Wireless Volume Controller provides stylish and compact volume control for all SAM studio monitors and subwoofers connected to the GLM 2.0 Network Adapter.

The 9101A uses wireless radio frequency to communicate with the Genelec GLM 2.0 Network Adapter. The 9101A is available in black colour.

9310A Volume Controller



Product Overview:

The Genelec 9310A Volume Controller provides stylish wired volume control for all SAM studio monitors and subwoofers connected to the GLM 2.0 Network Adapter

The volume controller features a 3.5 mm stereo male connector providing easy connectivity to the Genelec GLM 2.0 Network Adapter. The 9310A is available in black colour.

AD9200A AD Converter



Access to the benefits of Genelec's SAM systems and Genelec digital active systems is made easier than ever with the AD9200A Analog to Digital converter. The Genelec AD9200A allows using our SAM studio subwoofers and digital active subwoofers with analogue signal sources, bringing the full potential of Genelec's SAM and digital systems to all applications.

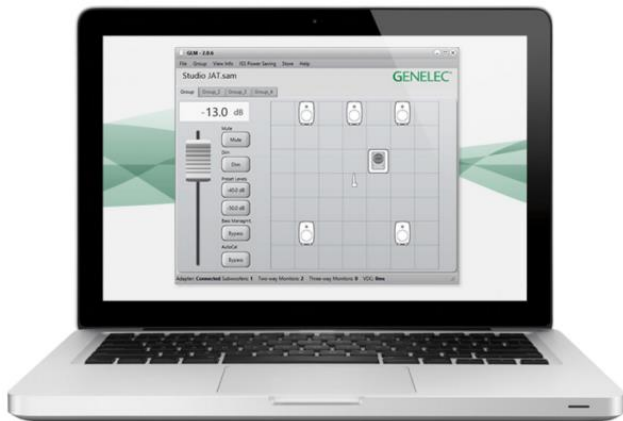
The Genelec AD9200A converter outputs AES3 format with 24 bit word length and 192 kHz sample rate, providing the same consistent high quality found on our SAM products. Eight-channel balanced analog input is delivered via a 25-pin DB25 connector wired to the Tascam/ProTools industry standard pinout. Digital output consists of four XLR connections, each carrying two channels of AES/EBU audio. The 19"/1U high chassis is delivered with a separate 12V power supply.

Technical Specifications:

- Number of channels: 8
- Analogue input type: Balanced DB25 pin out (Tascam)
- Digital audio format: AES/EBU (AES3)
- Word length: 24 bits
- Sample rate: 192 kHz
- Dimensions (H x W x D): 43 x 483 x 105 mm or, 1 11/16 x 19 x 4 1/8 in
- Weight: 2 kg / 4.4 lb

Genelec GLM™ 2.0

Product Overview:



The brain of every Smart monitoring system is Genelec Loudspeaker Manager (GLM™), and GLM 2.0 is the Smartest version yet. With an expanded feature set but the same intuitive ease of operation, the software is already creating the world's Smartest SAM Systems.

GLM 2.0 - Making SAM even Smarter

With GLM 2.0, the benefits of Smart monitoring are yours to use on both Windows and Mac. Designed for simple and intuitive operation yet rich with features, GLM 2.0 first gives you the tools you need to optimise your SAM system, then guides you through the process of making the most of your environment. Best of all, when your system is perfectly calibrated to your requirements, the settings are saved in both system setup files and each individual Smart monitor and subwoofer – even if your GLM 2.0 network needs to be disconnected, your system stays Smart.

With GLM 2.0 you can...

- Manage and control up to 30 Smart monitors and Smart subwoofers.
- Easily and swiftly create systems to suit all types of multichannel or 3D immersive audio formats.
- Optimise the performance of your Smart monitoring system and make the most of the environment in which you are working.
- Use AutoCal™ to achieve neutral sound reproduction. Accurate and stable sound stage imaging is delivered thanks to adjustments of levels, distance delays, subwoofer crossover phase and room response compensation equalisation.
- Store calibration settings for different listening positions then instantly recall them as required during production.
- Adapt to your acoustic environment – symmetrical or individualised stereo pair equalisation compensation can be used depending on your requirements.
- Achieve smooth frequency response transition around the crossover point, as phase is automatically corrected for all Smart subwoofers on the network.
- Use the Group function to create and recall customised response curves, with each monitor Group possessing its own GLM calibration file. Also include both analogue and digital inputs in Groups, plus an unlimited number of system setup files.
- Manage levels with the software-based GLM master fader or external wired or wireless volume controllers. An on-screen, real-time SPL reading of the active monitor Group allows you to keep watch over the production SPL.
- Enjoy the benefits of repeatable and consistent performance, enabling accurate monitoring in any production environment.

What is AutoCal ?

A world's first technology that changed how monitoring systems are created, AutoCal™ takes on the hard work of system optimisation so you don't have to. Included in the integrated process is the automatic measurement, analysis, and adjustment of every Smart monitor and Smart subwoofer on the GLM 2.0 control network.

A factory-calibrated Genelec 8300A acoustic measurement microphone (included) is used to capture all parameters of your acoustic environment.

AutoCal measures the response in the listening area and applies relevant compensation in the low and low-mid frequencies to minimise detrimental room acoustic anomalies as well as differences between various listening positions. It also sets the correct crossover phase for all Smart subwoofers on the network.

After automated calibration, based on one or more listening positions, all components in a system play back at the same level and timing, with acoustical colourations removed from the monitors' responses, leaving superb consistency and neutral sound stage imaging.

The Acoustic Response Editor provides an accurate graphical display of the measured response, filter compensation and the resulting system response for each monitor, with full manual control of acoustic settings.

SinglePoint™ and MultiPoint™ microphone positions provide measurements options to suit your requirements, including one, two or three person mixing environments. Additionally, calibration settings for different listening positions can be instantly recalled.